



Site Walk Form

5300 Parmer Lane
Austin TX 78717

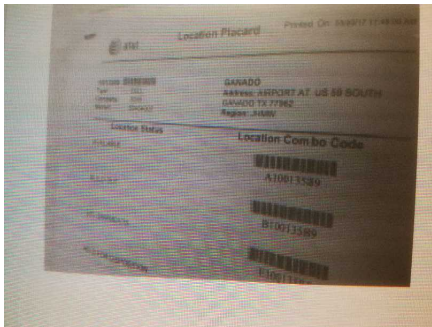
| | |
|--------------------------|---|
| Reference Number: | WO00182662 |
| Form Name: | Site Walk Form |
| Submitter Name: | Adam TechA |
| Submission Date: | Sep 27, 2018 12:45:00 PM EDT |
| Location: | Airport at US 59 S, Ganado, TX 77962, USA |

GENERAL INFORMATION

| | |
|---------------------------|--|
| GeoStamp | 261 Cross Keys Rd # A, Berlin, NJ 08009, USA Latitude: 39.78180213 Longitude: -74.95136693 |
| Date of Inspection | Sep 27, 2018 |
| Technician | Eric Tayar |
| FA Code | 10013589 |
| Market | 5045007 |

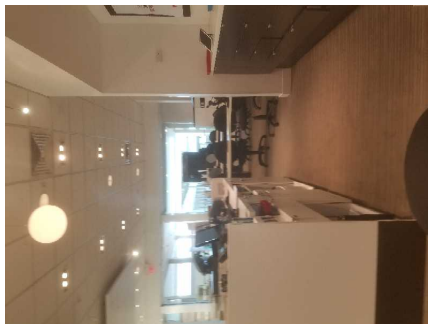
SHELTER DESCRIPTION

| | |
|-----------------|----------|
| Material | Concrete |
| Shelter | |



Roof Top

Stilt



Length of Pick for Crane

N/A

Ground

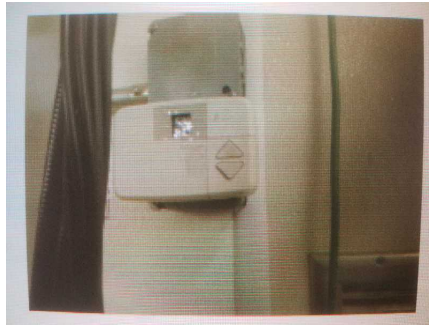
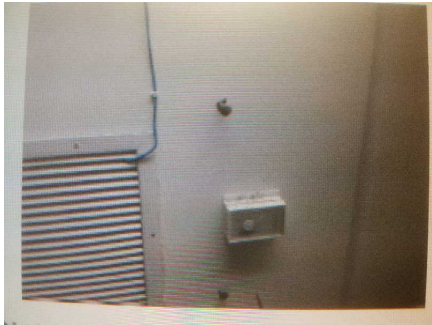


EQUIPMENT

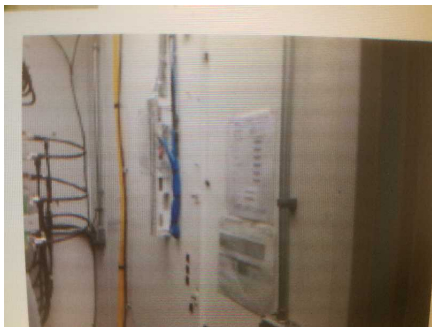
| | |
|--------------------|-------|
| Equipment # | 1 |
| Brand | Brad |
| Model | W36A1 |

| | |
|--------------------|------------------|
| Serial | 309P092672296-02 |
| Equipment # | 2 |
| Brand | Brad |
| Model | W36A1 |
| Serial | 309K102733535-02 |

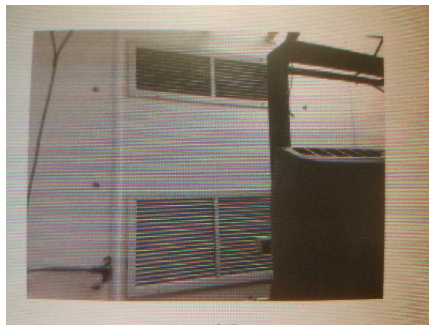
Controller



Pictures of location for cool link



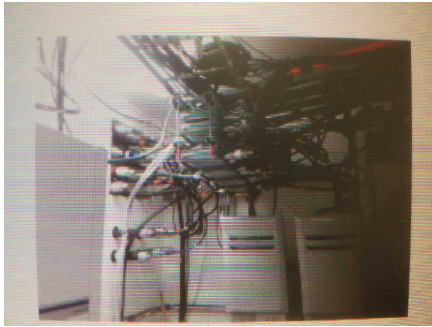
Grills



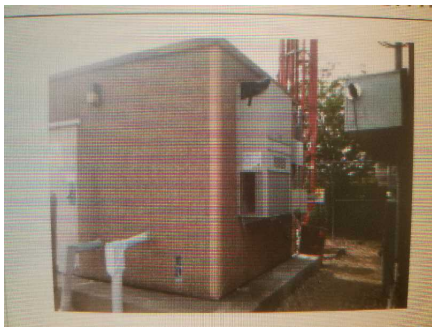
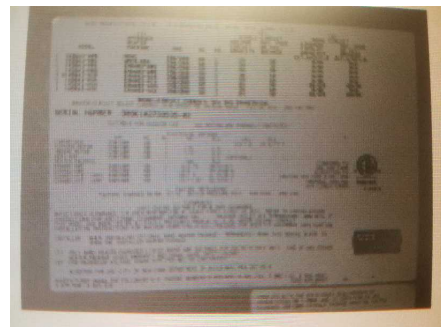
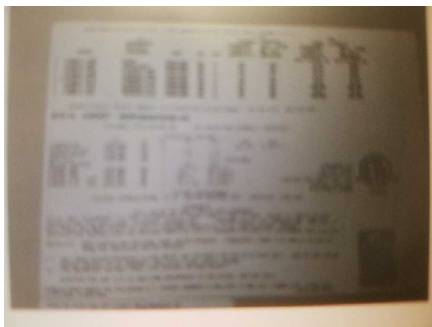
Cable racks location

Sides

Coaxial



Unit images



INTERIOR EQUIPMENT

Interior Equipment



Number of rectifiers

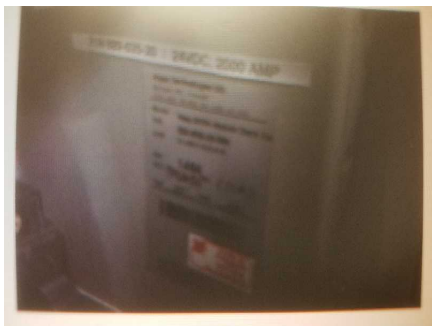


Number of Converters

Voltage 26.7

Amps 248

Plant Power Tag



Alarm Block



High Temp Alarm Setting 100

Smoke alarm



Room Temp on Arrival

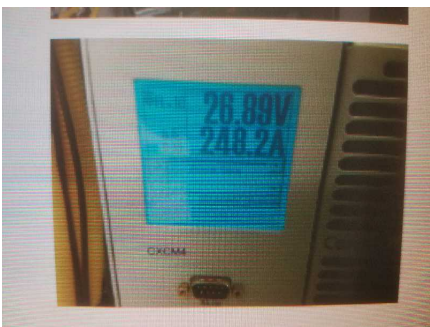
75

RADIO EQUIPMENT

Power Plant



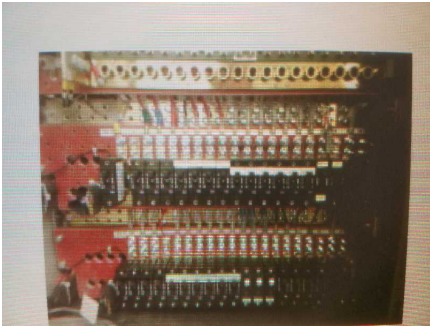
Power Plant Digital Read Out



Available Breaker spaces

5

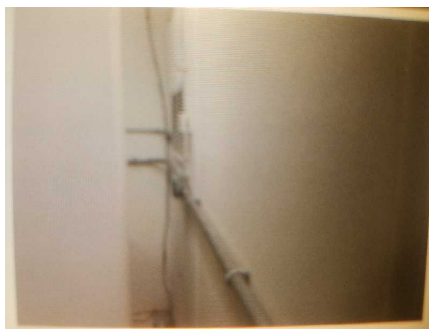
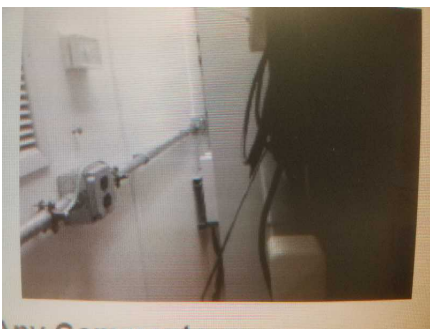
Picture of Inside Power Plant



High Voltage Breaker



LTE Equipment



Any Comments

3ton holes on back wall. Two tone holes on one end wall. Very tight shelter to work in.